

**Tommies vs. Gophers – Sunday, January 2<sup>nd</sup>**

**2:00 pm Puck Drop – Doors Open at 1:00 pm**

**PARKING OPTIONS**

**Doug Woog Arena** – 141 6<sup>th</sup> Street East, South St Paul, MN 55075 – Phone: 651-554-3330

**There is a limited amount of parking spaces at Doug Woog Arena. Other options available include the following (refer to Shuttle Route maps):**

- A) **Bremer Bank Office Building** (Lot A on Shuttle Route #1 map) – 633 Concord Street South
- B) **Envision Hotel** (Lot B on Shuttle Route #1 map) – 701 Concord Street South
- C) **Midwest Fence** (Lot C on Shuttle Route #1 map) – 525 Villaume Avenue
- D) **Sportsman’s Guide Warehouse** (Lot D on Shuttle Route #1 map) - 411 Farwell Avenue
- E) **American Bottling Co Armour Avenue Parking Lot** (Lot E on Shuttle Route #1 map)
- F) **Croatian Hall** – (Lot F on Shuttle Route #2 map) – 445 2<sup>nd</sup> Avenue South
- G) **Vacant Gravel Parking Lot** – (Lot G on Shuttle Route #2 map) – South of Stockyards Tavern & Chophouse at 456 Concord Exchange South (NO EVENT PARKING IN THE RESTAURANT’S PAVED PARKING LOT)

A number of these parking areas are within walking distance to the arena. On street parking is also available on Villaume Avenue and Concord Exchange.

**There is NO ON STREET PARKING ON 6<sup>TH</sup> STREET (the road where the arena is located)**

**SHUTTLE INFORMATION** - There will be a shuttle (**Shuttle Route #1**) that will run a loop to and from Doug Woog Arena to Lots (A & B – pick up/drop site will be at Lot (A)), and Lots (C), (D) & (E) starting at 12:30 pm and running to 5:30 pm (route highlighted in red and color).

There will also be a shuttle (**Shuttle Route #2**) that will run a loop to and from Doug Woog Arena starting at Lot F (Croatian Hall) and will also include Lot G (Vacant Gravel Parking Lot on Concord Exchange) and will start at 1:00 pm (route highlighted in red).

Shuttle drop off and pick up will be at the north end of the arena.

**OTHER NOTES** - At commencement of the game vehicles exiting the arena parking lot will only be allowed to make a right-hand turn (excludes Shuttle buses), which takes you to Concord Street.

Local establishments open for business on that Sunday include Al’s Corral, Bugg’s Place, Concord Lanes, Croatian Hall, Envision Hotel, and Stockyards Tavern & Chophouse.

**SHUTTLE ROUTE #1**



 **Shuttle Stop**

 **Shuttle Route**

(Runs from 12:30 PM to 5:30 PM)

Lot A: Bremer Bank Office Building at 633 Concord Street South

Lot B: Envision Hotel at 701 Concord Street South

Lot C: Midwest Fence at 525 Villaume Avenue

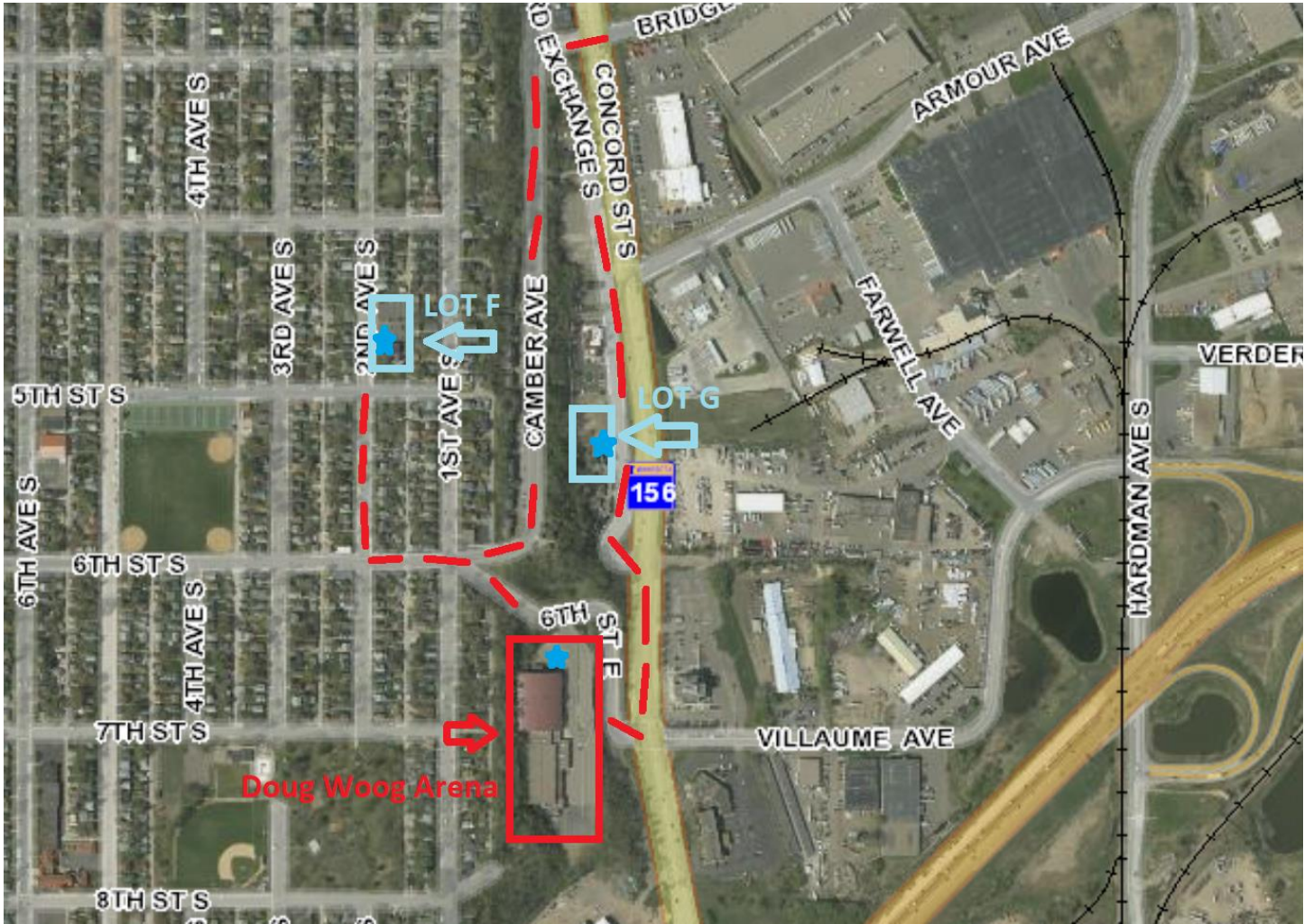
Lot D: Sportsman Guide Warehouse at 411 Farwell Avenue

Lot E: American Bottling Company Armour Avenue Parking Lot

*\*On-Street Parking Also Available on Villaume Avenue*



SHUTTLE ROUTE #2



Lot F: Croatian Hall at 445 2<sup>nd</sup> Avenue South

Lot G: Vacant Gravel Parking Lot South of Stockyards Tavern and Chophouse at 456 Concord Exchange South (NO EVENT PARKING IN THE RESTAURANT'S PAVED PARKING LOT)

*\*On-Street Parking Also Available on Concord Exchange*

 Shuttle Stop

 Shuttle Route

(Starts at 1 PM)

**NO ON-STREET PARKING ON 6<sup>th</sup> STREET (the road where the arena is located)**